



Water quality as a challenge for achieving SDG 6

21. Februar 2019
Frankfurt am Main

Godehard Hennies
Geschäftsführer CEO Wasserverbandstag e.V.



Wasserverbandstag

Approx. 950 Associations with various Terms of Reference

- Coastal protection (600 km of dikes along the North Sea) and flood protection for inland rivers
- Waters maintenance for regional rivers (28.000 km) and local rivers (130.000 km)
- Drinking water (80 % market share in the rural areas)
- Wastewater treatment and disposal
- Further tasks according to § 2 legal regulation for water Boards

Members of the Associations

- Municipalities
- Landowners
- Self-governing bodies governed by public law

Deichgeschütztes Gebiet in Niedersachsen

Dike Protected Area in Lower-Saxony



(1) Leda-Sperwerk (2) Emssperwerk (3) Sperwerk Leysiel (4) Hunte-Sperwerk (5) Ochtrup-Sperwerk (6) Lesum-Sperwerk (7) Geeste Sturmflutsperrwerk (8) Ostesperwerk (9) Sperwerk Freiburg (10) Sperwerk Wischhafen (11) Sperwerk Ruthenstrom (12) Sperwerk Abbenfleth (13) Schwinge-Sperwerk (14) Lüle-Sperwerk (15) Este-Sperwerk (16) Sperwerk Seevesiel (17) Ilmenau-Sperwerk

- 645 km Hauptdeiche, 17 Sperwerke, 88 km Schutzdünen
- 6.600 km² deichgeschütztes Gebiet, 1,2 Mio Einwohner
- Hohes Schutzniveau, kein absoluter Schutz



Water Boards in Lower Saxony

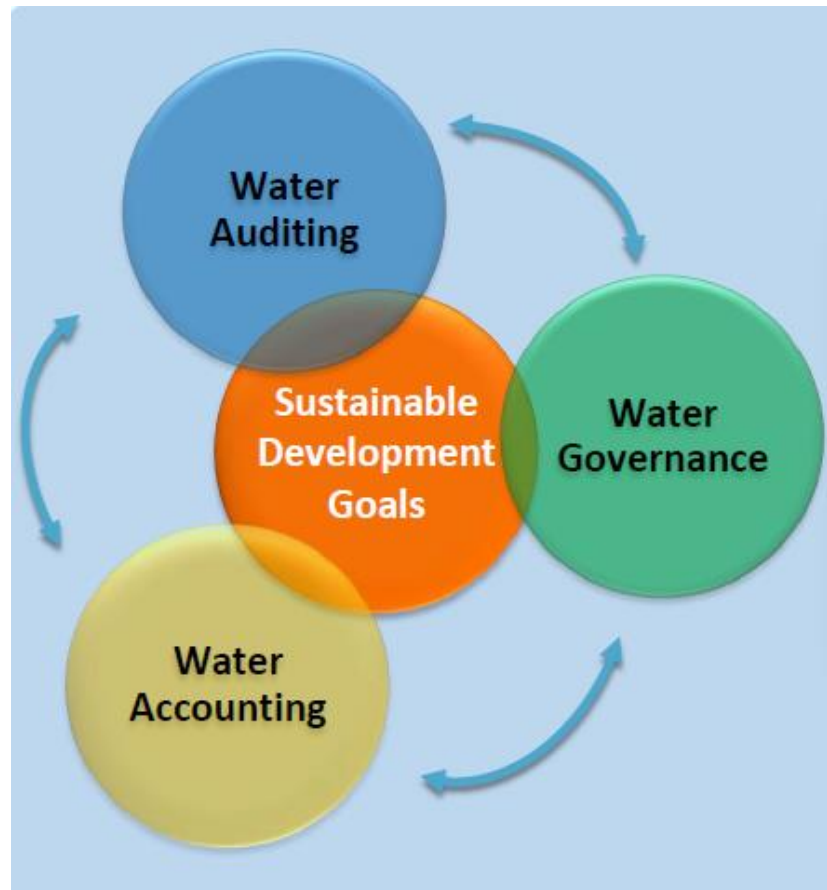
- Public Entities, involving stakeholders cooperatively
- Self-governing under various administrative supervision
- In Common Public Interest and non-profit
- Membership area-wide: municipalities and/or landowners
- Insolvency free obligation
- Allocation of tasks mainly in rural areas

SUSTAINABLE DEVELOPMENT GOAL 6

Ensure availability and sustainable management of water and sanitation for all

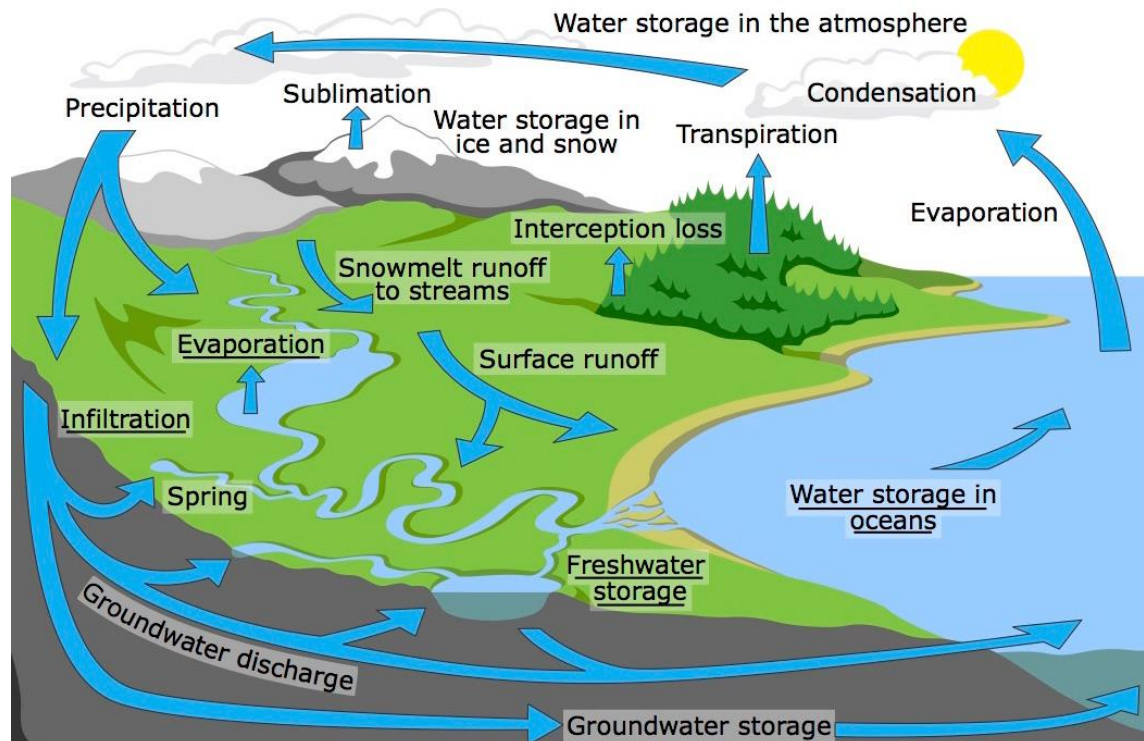


Wasserverbandstag e.V.
Bremen | Niedersachsen | Sachsen-Anhalt





DYNAMIC AND COMPLEX: THE GLOBAL WATER CYCLE



© Copyright. University of Waikato. | www.sciencelearn.org.nz

Managing basics



- Data collection and development of suitable models describing the local and regional water cycle (decision support and)
- Implementation of state of the art (Industrial Standard DIN, EU directives, federal and regional law, regional planning programs)



CAM-Tool (Coastal Aquifer Management)

GROW
WATER AS A GLOBAL RESOURCE

CAM Dialog Platform & Decision Support

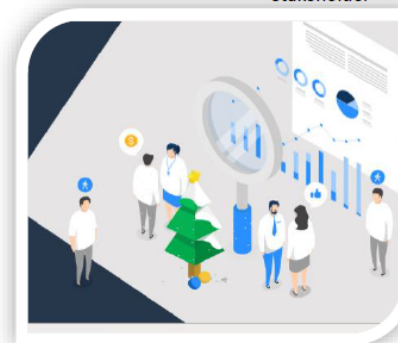


Water
accounting

Water
auditing

Water
Governance

Stakeholder



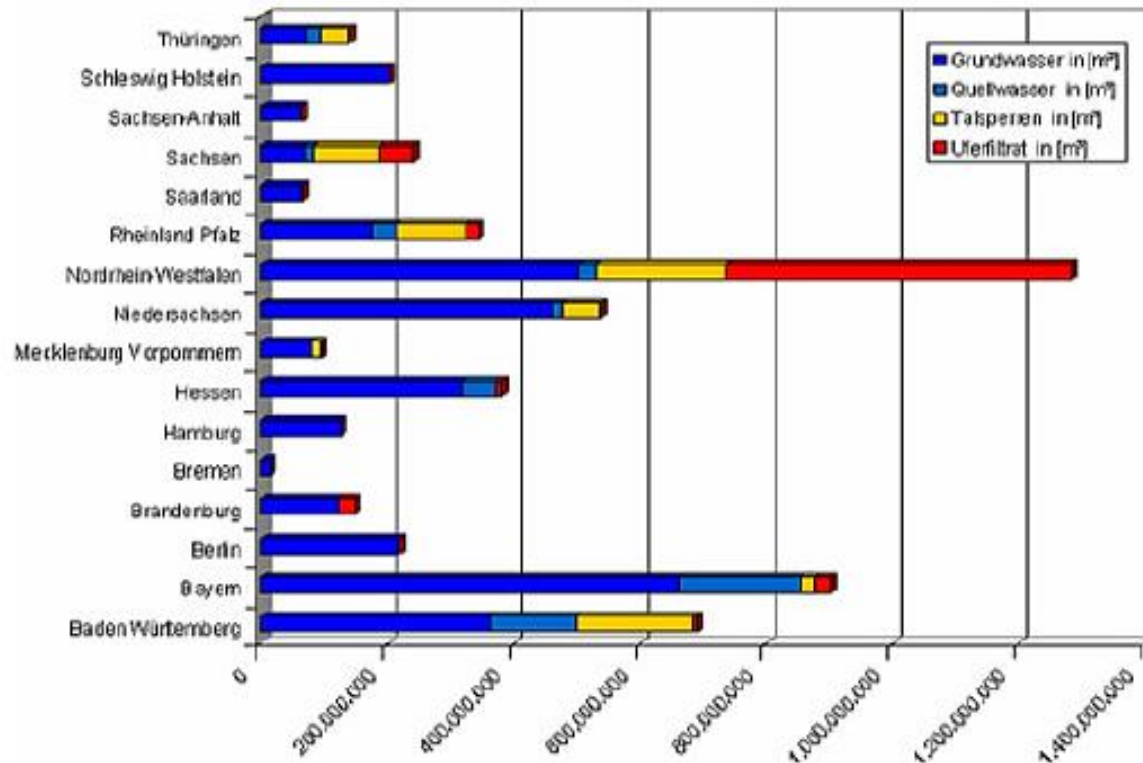
- Informed by data and models on water quality and quantity (scenario projections)
- As well as auditing analyses and governance settings
- Each project is accessible for multiple users
- Allows each user to define preferences (indicators)
- MCDA Processing for finding compromise
- Stakeholder gain transparency and objectivity in the decision making process

EU Framework with subsidiarity consequences



- The EU Water Framework Directive considers as its number one:
“Water is not a commercial product like any other but a heritage which must be protected, defended and treated as such.”
- This includes in our area water quantity aspects as well: Freshwater and drinking water supply is based on groundwater abstraction and thus **groundwater is part of the common goods.**

Basics and framework conditions



85 % of the drinking water in Lower Saxony is extracted from groundwater!

Profile of the German Water Sector 2015





Wasserverbandstag e.V.
Bremen | Niedersachsen | Sachsen-Anhalt

Chemical status of groundwater bodies in Germany



groundwater bodies' status

■ good

■ bad

■ unclear

■ capital of German Land

■ German capital

— river basin unit

Source: Federal Ministry for the Environment, Nature Conservation, Building and Nuclear Safety/ Federal Environmental Agency – “Water Framework Directive – The way towards healthy waters”. Based on the data of the portal WasserBLICK/BfG, status 03/2010



Water - it's not like you need to live: you are life itself.

You are the most delicious possession of the earth.

Antoine de Saint-Exupéry