



SDGs – Hitting the Targets

A GROW Cross-cutting topic

Prof. Claudia Pahl-Wostl, University of Osnabrück, STEER project

Dr. Ursula Eid, Advisory Panel GROW

Dr. Anna Smetanova, Technical University Berlin, SaWaM project

Dr. Frank-Andreas Weber, FiW e.V., InoCottonGROW project

GEFÖRDERT VOM



Bundesministerium
für Bildung
und Forschung

Goals of the Initiative

- Identification of synergies and opportunities for cooperation between the individual projects.
- Developing a strategy at GROW level how to bring project results and products into the SDG implementation process.

First Product



GRow position paper on SDG 6

Strengthening the evidence base for the SDG process

7 June 2018

- Presented at the HLPF on SDGs in New York July 2018
- Feedback and expressions of interest from a range of international stakeholders

Key Challenges Identified

- Competing or even conflicting targets in different SDGs are not well understood, and neither are scale- and region-dependent trade-offs and synergies
- Some of the existing indicators for measuring progress on achieving SDG 6 do not sufficiently represent the outlined targets, are not conceptually clear or measurable, or lack adequate data.
- The global community of water researchers and practitioners is rather fragmented.

Two Working Groups

- Indicators, data & models (A. Smetanova)
- Conflicting targets and synergies between different SDGs (F.-A. Weber)

Outlook

- Policy Briefs
- Opinion Papers
- Session(s) at the world water week
- Cooperation with and input into international networks / activities (e.g. GEMI)

WG: Indicators, Data & Models

- Group established 03/23/2018
- Established to make use of the great experience of GRow global collaborative network

WG: Indicators, Data & Models

- Group established 03/23/2018
- Established to make use of the great experience of GRow global collaborative network
- Aim:

Inform policy process about

1. Opportunities and threads of SDGs monitoring process according to GRow
2. GRow methods which can improve existing monitoring process
3. Real life example(s) where GRow approaches can improve existing monitoring

SDGs 6

Ensure availability and sustainable management of water and sanitation for all



SDGs- international efforts

On ground water management

SDGs 6

Ensure availability and sustainable management of water and sanitation for all



SDGs- international efforts



On ground water management

WG: Indicators, Data & Models: Work in Progress

- Done: Questionnaire
- In progress: Policy Paper

“Making the most out of SDG monitoring for sustainable water resources management on the ground”

(to be submitted at World Water Week 2019)

WG: Indicators, Data & Models: Work in Progress

- Done: Questionnaire
- In progress: Policy Paper

“Making the most out of SDG monitoring for sustainable water resources management on the ground”

(to be submitted at World Water Week 2019)

Aims:

1. To review the contribution of existing monitoring schemes for SDGs monitoring (on sub- & national level)
2. To illustrate how methods developed within GRow projects can contribute to SDGs monitoring

WG: Indicators & Data, Models: Outlook

Opinion / Position paper

- Sub- & national examples from GRow network on issues related to SDGs monitoring and implementation
- Sub- & national examples of improvements of SDGs monitoring via GRow

WG: Indicators & Data, Models: Outlook

Opinion / Position paper

- Sub- & national examples from GRow network on issues related to SDGs monitoring and implementation
- Sub- & national examples of improvements of SDGs monitoring via GRow

⇒ **Your contribution to WG activities are warmly welcomed**

⇒ Contact & questions:

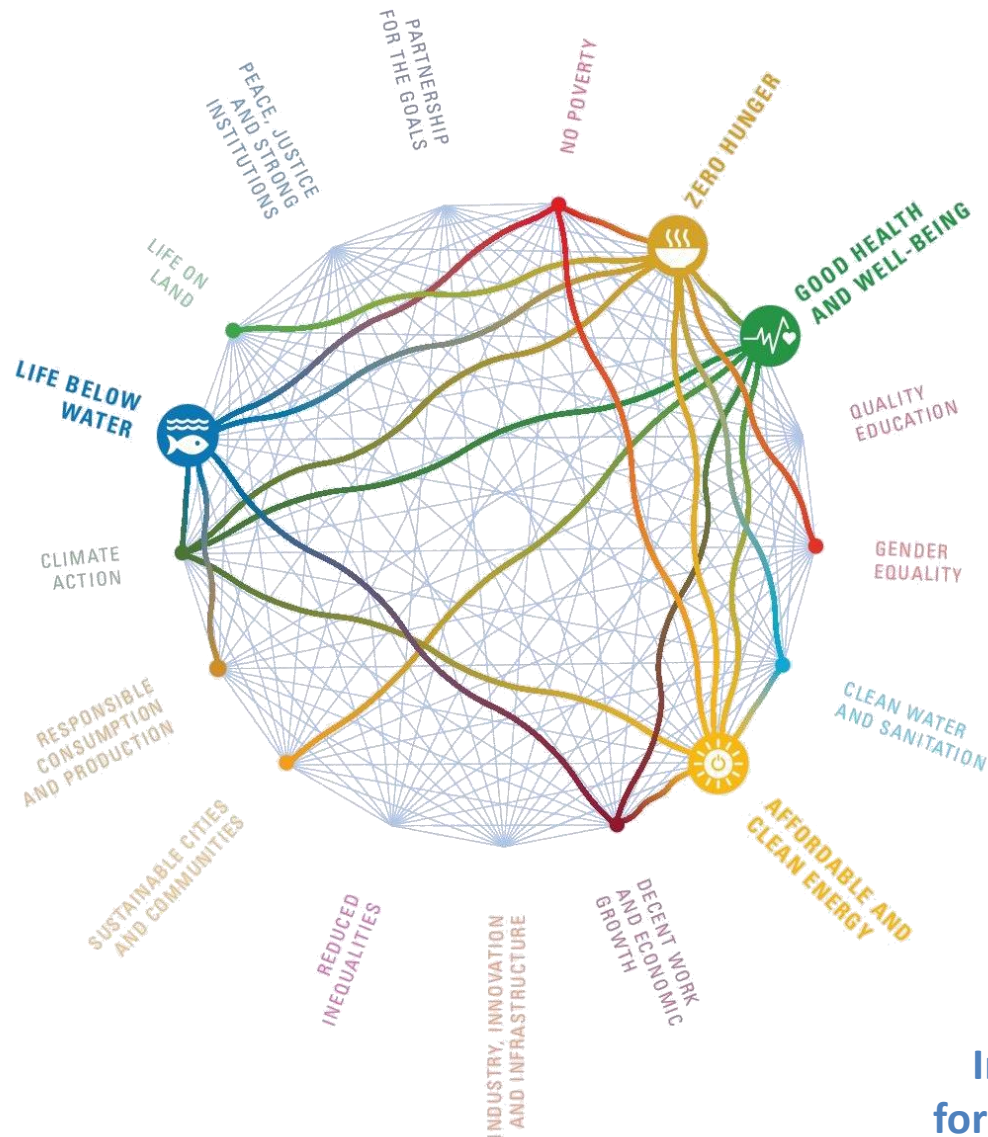
Dr Anna Smetanova, anna.smetanova@tu-berlin.de

WG „Conflicting Targets and Synergies“

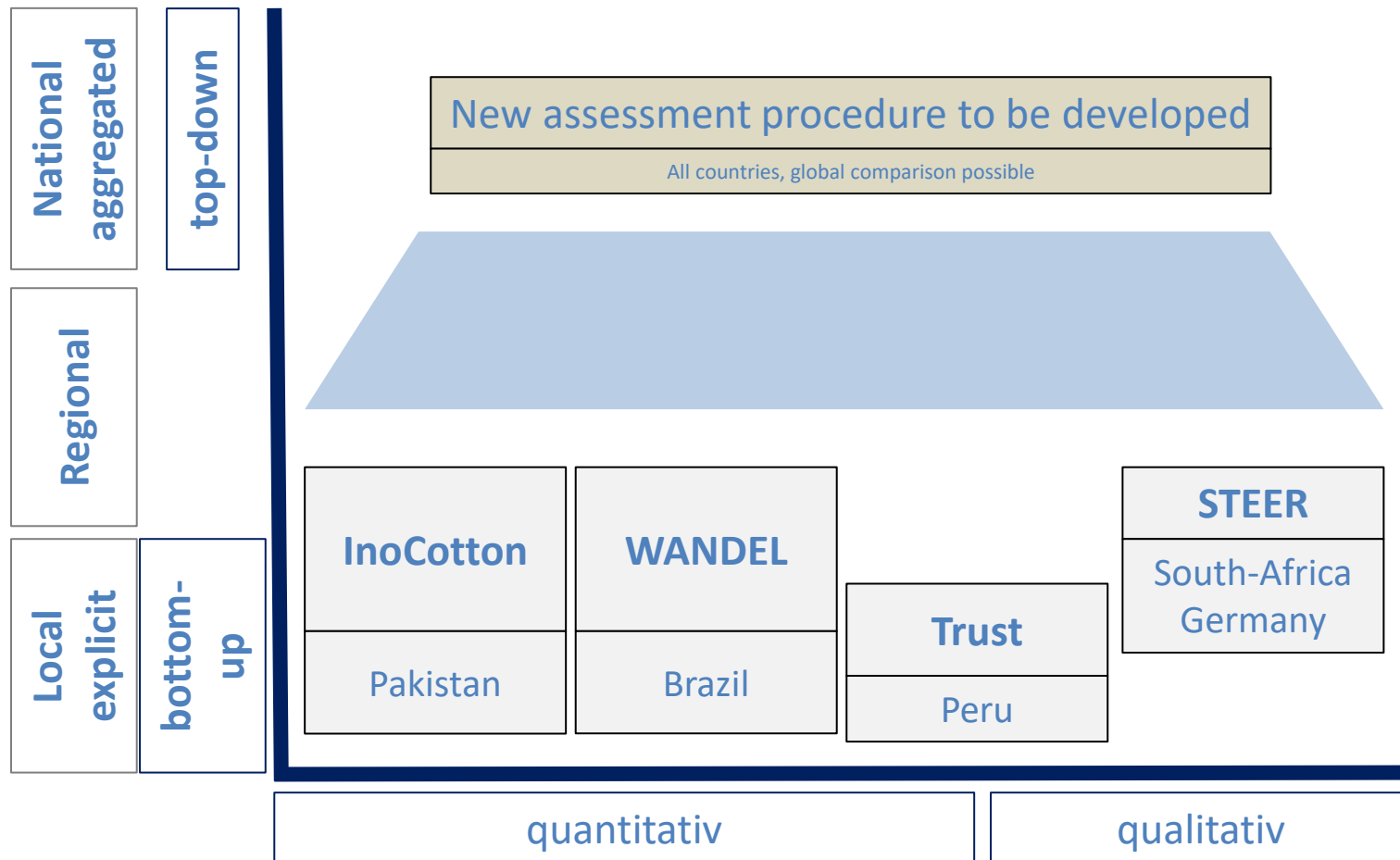
Aim:

1. Demonstrate the **importance of SDG 6 in achieving other SDGs** using regional expertise, examples and best practices from work generated within GRoW
 2. Develop **new assessment procedure** by which one can evaluate the effects of key projects / policy strategies on achieving UN-SDG targets including indirect conflicting / synergetic effects
- **Support decisions-making** to avoid / minimize conflicting effects and size synergies for UN-SDG achievement.

Analyzing Interactions of Targets



Assessment Approaches in GRow Projects



Conceptualization: New Assessment Procedure

Pakistan	
SDG	ICSU
1	0
2	2
3	2
4	0
5	0
within 6	3
7	0
8	2
9	3
10	-1
11	1
12	3
13	0
14	1
15	1
16	0
17	2



2		3	
<2.5	PERCENT	5	PER_100000_LIVE_
0.6	PERCENT	98.7	PERCENT
		3	PER_1000_LIVE_BIP
		2.3	PER_1000_LIVE_BIP
		6.8	PER_100000_POP
			PERCENT
			PER_100000_POP
5.031	PERCENT	13.65	LTPUREAL



Furrow full irrigation	64%
Drip irrigation	90%
Furrow 10% deficit	71%
Furrow 20% deficit	80%



value1
value2
value3
value4
value5

UN-SDG interactions:
expert judgement on
different scale

National Indicators
from databases or
surveys

Key Project / Policy Strategy
evaluated process-oriented
on appropriate scales

Assessment:
impacts on SDG
achievement

WG „Conflicting Targets and Synergies“

Collaborator:

- Manuel Krauß (TRUST)
- Ulf Stein (STEER)
- Martina Flörke (WANDEL)
- Kristina Wencki, Jean Ferox, Frank-Andreas Weber (InoCottonGROW)

Your contribution is warmly welcomed.

⇒ **Contact:**

Dr. Frank-Andreas Weber, weber@fiw.rwth-aachen.de