

## Public awareness

ZEF communicates its research work and outcome to an audience beyond academic peer groups by means of workshops, events and lecture series as well as newsletters and reports. In addition, ZEF keeps you up to date via its Website and its social media channels Facebook, Twitter, Instagram and Youtube.



## Policy dialogue and advice

ZEF provides advice to policy-makers, business, institutions and non-governmental organizations on issues of development policy.

## Finances

The main funding partners of ZEF's research and its doctoral program are: The German Federal Ministry of Education and Research (BMBF), German Federal Ministry for Economic Cooperation and Development (BMZ), the German Academic Exchange Service (DAAD), the European Commission (EC), the Robert Bosch foundation, the Volkswagen foundation, the German Research Foundation (DFG), and foundation fiat panis.



@zefbonn



facebook.com/zefunibonn



@zefbonn



facebook.com/zefbonn

Center for Development Research (ZEF)  
University of Bonn  
Walter-Flex-Str. 3  
(to be renamed into Genscherallee 3 as of August 2017)  
53113 Bonn, Germany  
e-mail: presse.zef@uni-bonn.de

Department of Political and Cultural Change  
Director: Prof. Dr. Eva Youkhana  
Prof. Dr. Solvay Gerke (as of August 2017)  
Phone: # 49 (0) 228 / 73-1971  
e-mail: office.zefa@uni-bonn.de

Department of Economic and Technological Change  
Director: Prof. Dr. Joachim von Braun  
Phone: # 49 (0) 228 / 73-1861  
e-mail: g.ritter.pilger@uni-bonn.de

Department of Ecology and Natural Resources Management  
Director: Prof. Dr. Christian Borgemeister  
Phone: # 49 (0) 228 / 73-1865  
e-mail: s.aengenendt-baer@uni-bonn.de

Press and Public Relations  
Head: Alma van der Veen  
Phone: # 49 (0) 228 / 73-1846  
e-mail: presse.zef@uni-bonn.de

BIGS-DR (ZEF Doctoral Program)  
Academic Coordinator: Dr. Günther Manske  
Phone: # 49 (0) 228 / 73-1794  
e-mail: docp.zef@uni-bonn.de



**zef**  
Center for  
Development Research  
University of Bonn

# Information in brief



**zef.de**

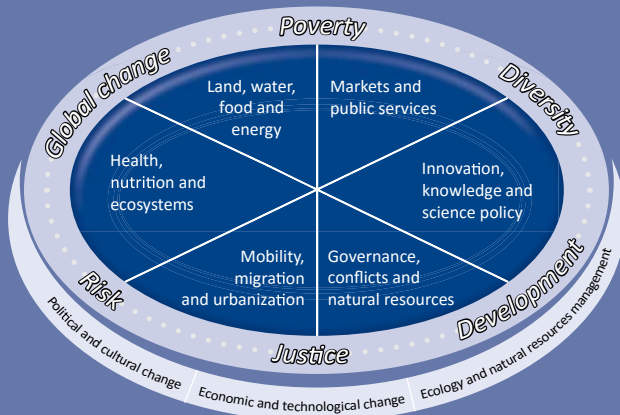
April 2017

UNIVERSITÄT **BONN**



... is an international and trans-disciplinary scientific research institute at the University of Bonn which started its research activities in 1997.

ZEF's overall goal is to contribute with its research and education to enhancing sustainable human development and combating poverty in Asia, Africa and Latin America. ZEF also strives to strengthen international development research and therefore cooperates closely with researchers from all over the world and with experts in the field of development policy and cooperation.



ZEF has three research departments:

- Political and cultural change
- Economic and technological change
- Ecology and natural resources management.

The three departments are interconnected by crosscutting research themes: Land, water, food and energy; Health, nutrition and ecosystems; Governance, conflicts, and natural resources; Mobility, migration and urbanization; Markets and public services; Innovation, knowledge and science policy. Disciplinary research is conducted within our departments and projects. New research projects and proposals for doctoral theses have to fit into ZEF's research agenda.

ZEF follows an integrative and trans-disciplinary research approach. Natural and social scientists devise research questions and solutions together with economists and in close cooperation with local partners.

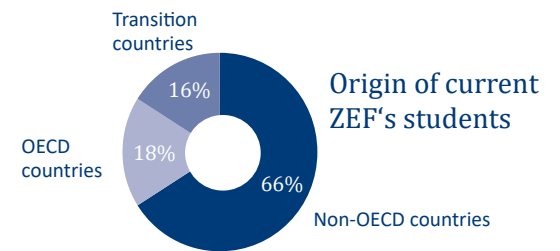
Trans-disciplinary research bridges the gaps between:

- disciplinary research fields
- research and politics
- research and practice.

ZEF is running research projects in Africa, Asia and Latin America.

ZEF has a strong focus on human, academic, and institutional capacity building. Following up on its long-term research activities, the Center has been establishing capacity development partnerships with academic institutions and networks in its research regions over the years.

With its **international Doctoral Program (BIGS-DR)**, ZEF aims to educate a new generation of academics as well as decision makers for international development policy. Its international and interdisciplinary set-up in addition to its size make this program unique in Germany and Europe.



Doctoral students at ZEF complete their theses within 3.5 years on average. Around 140 doctoral students participate in the program, with an intake of 20-30 new students per year. More than 600 students from around 90 countries have taken part in the program since its inception in 1999. In the meantime, ZEF has set up a world-wide alumni network of former graduates.

